



# 2024 Public Safety Power Shutoff Functional Exercise

## Controller/Evaluator Handbook

May 13-16, 2024

*The Controller/Evaluator (C/E) Handbook provides instruction and information for exercise staff. Because the C/E Handbook contains information about the scenario and about exercise administration, it is distributed only to those individuals specifically designated as controllers or evaluators; it should not be provided to exercise players. Exercise staff should refer to this document for guidance prior to, during, and following the exercise series.*



# TABLE OF CONTENTS

Table of Contents.....2

General Information .....3

Exercise Logistics .....7

Post Exercise Activities.....8

Controller Information & Guidance .....9

Evaluator Information & Guidance.....11

Simulator Information & Guidance.....13

Appendix A: Exercise Schedule .....15

Appendix B: Communications Plan .....16

Appendix C: Exercise Scenario .....17

Appendix D: Plan Excerpts .....25

Appendix E: Acronyms.....26

# GENERAL INFORMATION

## EXERCISE OVERVIEW

<b>Name</b>	Public Safety Power Shutoff (PSPS) Functional Exercise (FE)
<b>Dates &amp; Duration</b>	May 13-16, 9:00 AM – 3:00 PM
<b>Purpose</b>	The purpose of this exercise is to test SDG&E's understanding of de-energization, re-energization, and notification procedures for a PSPS event and is designed to provide forum for internal participants and external stakeholders to enhance their knowledge, understanding, and ability to implement appropriate actions responding to PSPS events while adhering to CPUC compliance guidelines.
<b>Scope</b>	This exercise is a functional-scale exercise, planned for four (4) days, each with set timeframes of exercise play conducted at SDG&E EOC, SDG&E Century Park Campus. Exercise play will focus on SDG&E's PSPS operations from Activation of PSPS protocols through all PSPS Stages of response operations.
<b>Focus Area(s)</b>	Exercise Day 1: Activation of PSPS Protocols & Stage 1 (72hr Ahead) Exercise Day 2: Stage 1 (48-hr & 24hr Ahead) Exercise Day 3: Stage 2 & 3 (De-energization) Exercise Day 4: Stage 4 & 5 (Re-energization)
<b>Capabilities &amp; Objectives</b>	<ul style="list-style-type: none"> <li>• <b>Operational Coordination:</b> Exhibit the ability to implement PSPS processes in accordance with all applicable SDG&amp;E PSPS plans, policies, and procedures, and in compliance with current CPUC PSPS guidelines.</li> <li>• <b>Operational Communication:</b> Engage with public safety partners, providers, and agencies to establish and maintain situational awareness throughout the duration of a PSPS event.</li> <li>• <b>Public Information and Notification:</b> Demonstrate the capability to deliver all required notifications to impacted Public Safety Partners, and customers, in accordance with established regulatory PSPS protocol timelines.</li> <li>• <b>Community Resilience:</b> Display the capability to initiate and maintain support programs for customers, to include Community Resource Centers (CRCs), access and functional needs services, and other appropriate support programs.</li> </ul>
<b>Threat or Hazard</b>	Elevated or extreme fire weather threat event meeting PSPS thresholds
<b>Participating Organizations</b>	This exercise is focused on SDG&E's EOC members and our external partners. For a full list of participants, see appendices of this document.
<b>Point of Contact</b>	Sarah Gladys Johnson Emergency Management, Training & Exercise Program Manager Sglady1@sdge.com

## PARTICIPANT ROLES AND RESPONSIBILITIES

The term participant encompasses many groups of people, not just those playing in the exercise. Groups of participants involved in the exercise, and their respective roles and responsibilities, are as follows:

- **Players:** Players are personnel who have an active role in discussing or performing their regular roles and responsibilities during the functional exercise. Players discuss or initiate actions in response to the simulated emergency.
- **Controllers:** Controllers plan and manage exercise play, set up and operate the virtual exercise site, and may support simulation.
- **Simulators:** Simulators are control staff personnel who deliver scenario injects representing actions, activities, and conversations of an individual, agency, or organization that is not participating in the exercise. Simulators function semi-independently under the supervision of the SimCell Lead Controller, in accordance with instructions provided in the Master Scenario Events List (MSEL).
- **Observers:** Observers are individuals that do not directly participate in but may watch selected segments of the exercise as it unfolds.
- **Evaluators:** Evaluators evaluate and provide feedback on a designated functional area of the exercise. Evaluators observe and document performance against established capability targets and critical tasks, in accordance with the Exercise Evaluation Guides (EEGs).

## EXERCISE ENGAGEMENT

This functional exercise will take place in-person with virtual access to components of the exercise. The exercise will take place over a four-day period evaluating SDG&E's response to a PSPS event. The goal of this exercise is to engage aspects of PSPS operations through all stages of an SDG&E PPS event.

- **Day One** of the exercise will begin with exercise play focused on PPS Activation Protocols followed by a focus on functions at 72-Hours Ahead of a forecasted PPS event with players executing upon Stage 1 of SDG&E PPS protocols for the given timeframe.
- **Day Two** of the exercise will focus exercise play on PPS functions at 48 and 24 Hours Ahead of a forecasted PPS event involving players executing upon Stage 1 of SDG&E's PPS protocols or the given timeframe.
- **Day Three** of the exercise will focus on PPS functions at day of forecasted PPS event, with players executing upon Stage 2 & Stage 3 of SDG&E's PPS protocols, specifically the de-energization process.
- **Day Four** of the exercise will focus on PPS functions at Stage 4 & Stage 5 of SDG&E's PPS protocols with players executing upon the re-energization process.

## 2024 Public Safety Power Shutoff Functional Exercise Controller/Evaluator Handbook

This exercise will use the following systems and/or processes to engage exercise players. The following table depicts how each system or process is to be utilized for exercise players each day.

*Figure 1. Systems and Process Utilization*

		May 13	May 14			May 15	May 16
System or Process	Env.	72 hour	48 hour	24 hour	De-Energization	Re-Energization	
Meteorology Briefings	NA	Simulated: SimCell	Simulated: SimCell	Simulated: SimCell	Simulated: SimCell	Simulated: SimCell	
Enterprise Notification System (ENS) Report	Reporting w/no Notifications	Reporting w/no Notifications	Reporting w/no Notifications	Reporting w/no Notifications	Reporting w/no Notifications	Reporting w/no Notifications	
Geographic Information System (GIS) PSPS Preview	NA	Develop & Post	Develop & Post	Develop & Post	Simulated	Simulated	
PSPS Dashboard	Training Mode	Training Mode	Training Mode	Training Mode	Training Mode	Training Mode	
De-energized EOC Dashboard	Training Mode	Do Not Use	Do Not Use	Do Not Use	Training Mode	Training Mode	
Partner Portal & Mobile App	Live: Exercise Mode	Develop & Post	Develop & Post	Develop & Post	Develop & Post	Develop & Post	
California Governor's Office of Emergency Services (Cal OES) Online Form*	Live	Develop & Send	Develop & Send	Develop & Send	Develop & Send	Develop & Send	
California Public Utilities System (CPUC) Notification	Live	Develop & Send	Develop & Send	Develop & Send	Develop & Send	Develop & Send	
State Exec PowerPoint	NA	Do Not Use	Do Not Use	Do Not Use	Do Not Use	Do Not Use	
News Release	NA	Develop & Do NOT Send	Develop & Do NOT Send	Develop & Do NOT Send	Develop & Do NOT Send	Develop & Do NOT Send	
Accessible Hazard Alert System (AHAS)	QA	Develop & Do NOT Send	Develop & Do NOT Send	Develop & Do NOT Send	Develop & Do NOT Send	Develop & Do NOT Send	
Public Website	QA	Develop: QA only	Develop: QA only	Develop: QA only	Develop: QA only	Develop: QA Only	

## EXERCISE ASSUMPTIONS AND ARTIFICIALITIES

In any exercise, assumptions and artificialities may be necessary to complete play in the time allotted and/or account for logistical limitations. Artificialities and constraints, such as the exercise assembly area, may detract from realism. Exercise participants should accept that assumptions and artificialities are inherent in any exercise and should not allow these considerations to negatively impact their participation.

### Assumptions and Artificialities

- This is conducted in a no-fault learning environment wherein capabilities, plans, systems, and processes will be evaluated.
- Exercise simulation contains sufficient detail to allow players to react to information and situations as they are presented.
- Response times may be accelerated, assume the response timeline provided by exercise controllers are realistic, even if it is faster than real world actions would occur.
- Background information on the PSPS event has been developed in advance of this exercise or will be simulated due to its relevance to real-world systems or information.
- Participants may need to balance exercise play with real-world emergencies. Real-world emergencies take priority.
- While players are asked to complete tasks as they would in a real-world activation, some tasks will be notional (not actually completed) such as boots on the ground movement, website updates, or customer notifications. To identify what notifications will occur during the exercise, please see **Figure 1. Systems and Process Utilization**.
- External partners are invited as exercise observers to view internal SDG&E decision-making processes and operational coordination that occurs in SDG&E's EOC. SDG&E's EOC is a secure environment and existing policies regarding external coordination and participation in EOC operations will apply during real-world events.

# EXERCISE LOGISTICS

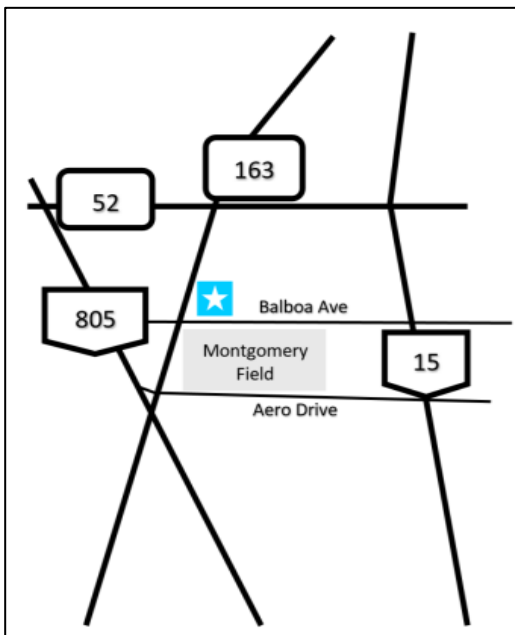
## SAFETY/ SECURITY

Exercise participant safety takes priority over exercise events. Although the organization involved in the PSPS functional exercise come from various groups, they share the basic responsibility for ensuring a safe environment for all personnel involved in the exercise. Professional health and safety ethics should guide all participants to operate in their assigned roles in the safest manner possible. It is important to be aware that participating in an operations-based exercise environment is inherently dangerous.

The following general requirements apply to each venue/location participating in the exercise:

- All controllers, evaluators, and other exercise staff will serve as safety observers while exercise activities are under way. Any safety concerns must be immediately reported to the on-site controller or Exercise Director.
- Participants will be responsible for their own and each other's safety during the exercise. All persons associated with the exercise must stop play if a real-world safety problem exists. After the problem is corrected, exercise play may resume.
- All organizations will comply with their own environmental, health, and safety plans and procedures, in addition to appropriate federal, state, and local environmental health and safety regulations.
- Real-world emergency actions take priority over exercise actions.
- Exercise players will comply with real-world emergency procedures, unless otherwise directed by the control staff.
- All communications (e.g., written or voice) regarding an emergency will begin with "THIS IS A REAL-WORLD EMERGENCY".

Figure 1: SDG&E Century Park Campus Location



## SITE ACCESS

SDG&E is located at 8326 Century Park Ct, San Diego, CA 92123. Participants will have access to highway specific directions through the 2024 SDG&E PSPS FE invite email/event calendar item. Upon arrival at SDG&E's Century Park, internal participants will proceed to EOC Situation Room at CP2.

For any external participants, please follow these instructions:

- Drive up to the security gate on the left after entering the cul-de-sac.
- Participants may use any unlabeled parking spots in the lot or garage.
- Follow signage and/or SDG&E staff directions to EOC Situation Room at CP2.
- External participants will sign in and receive a visitor pass from Security.
- A member of the exercise team will escort participants to the EOC.



# POST EXERCISE ACTIVITIES

## Hotwash

At the conclusion of each exercise day, a controller will lead a hotwash to allow players to discuss strengths and areas for improvement and to seek clarification regarding player actions and decision-making processes that were utilized during the simulated PSPS response. The information gathered during a hotwash contributes to the AAR/IP and any exercise suggestions can improve future PSPS exercises.

## Participant Feedback Survey

The Participant Feedback online Survey provides participants with the opportunity to comment candidly on exercise activities. Exercise staff will present access instructions for the survey following the Hotwash both in the EOC and the exercise Teams meeting chat on days 1-4. The link will also be e-mailed to all participants following the exercise. Participants are highly encouraged to complete this survey.

## After Action Report (AAR)

The AAR summarizes key information gathered during the evaluation process and hotwash. The AAR primarily focuses on the analysis of core capabilities, including capability performance, strengths, and areas for improvement. AARs also include basic exercise information, including the exercise name, type of exercise, dates, location, participating organizations, mission area(s), specific threat or hazard, a brief scenario description, and the name of the exercise sponsor and point of contacts.

## Improvement Planning

Improvement planning is the process by which the observations recorded in the AAR are resolved through development of concrete corrective actions. These identified actions will be prioritized and tracked as a part of a continuous corrective action program implemented by SDG&E.



# CONTROLLER INFORMATION & GUIDANCE

## OVERVIEW

The exercise controllers maintain the exercise scope, pace, and integrity during exercise conduct. The control structure in a well-developed exercise ensures that exercise play assesses objectives in a coordinated fashion at all levels and at all locations for the duration of the exercise.

## EXERCISE CONTROL STRUCTURE

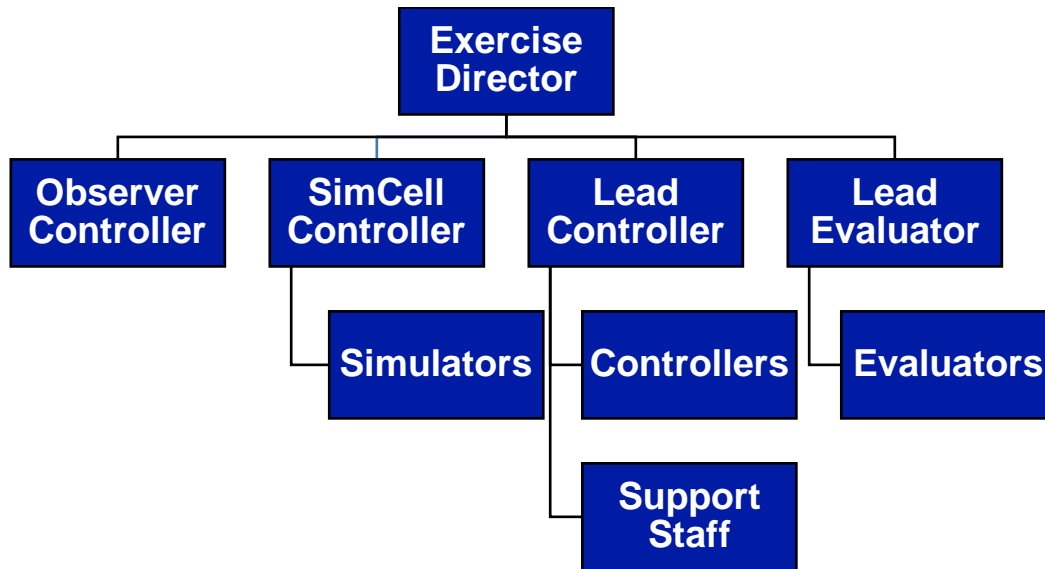


Figure X: Staff Organizational Chart

## CONTROLLER INSTRUCTIONS

### Before the Exercise

- Review the CE Handbook and MSEL, prior to the exercise.
- Participate in the Controller/Evaluator/Simulator training
- Report to designated exercise location no later than 7:45 AM on all exercise days.
- Ensure access to all necessary exercise platforms (e.g., Teams, Etc.).
- Perform all pre-exercise duties, as required.

### During the Exercise

- Monitor the exercise timeline, MSEL, and pace of the exercise.
- Do not give information to players about scenario progress or other participants' methods of problem resolution.
- Do not make up information.
- Ensure players stay on topic.

### After the Exercise

- Participate in the Hotwash.
- Meet with evaluators, as necessary, to ensure all information was adequately captured from the exercise.
- Participate in the Staff Debriefing following the exercise.

## CONTROLLER RESPONSIBILITIES

### Exercise Director

- Performs any designated exercise kick-off activities as designated (e.g., exercise briefings).
- Serves as the eyes and ears of the exercise.
- Oversees all exercise functions.
- Delivers exercise in-brief.
- Provides overall EOC controller support.
- Conducts hotwash at EOC.
- Supervises the safety of all exercise participants.

### Lead Controller

- Serves as the eyes and ears of the exercise.
- Oversees and remains in contact with other controllers, evaluators and SimCell.
- Coordinates decisions regarding deviations or significant changes to the exercise execution.
- Monitors exercise pace.
- Oversees setup and cleanup of exercise, and positioning of controllers and evaluators.
- Supports exercise in-brief and hotwash.
- Supervises the safety of all exercise participants.

### Simulation Cell (SimCell) Lead Controller

- Provides overall SimCell Controller support.
- Oversees simulators.
- Ensures players begin and end communications with “Exercise, Exercise, Exercise”.
- Monitors exercise pace.
- Maintains exercise pace by releasing injects as described in MSEL and adjusts inject pace as needed in coordination with Exercise Director and Lead Controller.
- Supervises the safety of all exercise participants.

### Support Controllers

- Provides overall EOC/SimCell support.

### Admin/Logistics Support

- Oversees all site exercise functions.
- Provide Controller support.

## CONTROLLER DOCUMENTATION

The controller documentation consists of the C/E Handbook; Controller, Evaluator, and Simulator Briefing; and the MSEL. Controllers should review and reference these materials and any additional professional material for exercise day.

# EVALUATOR INFORMATION & GUIDANCE

## OVERVIEW

Assigned exercise evaluators will assess SDG&E's capabilities to meet the objectives of the PSPS Functional Exercise. Evaluators will assess how players performed during exercise play. Information collected in the EEGs will be used to determine whether the exercise objectives were effectively met and will help identify strengths and areas for improvement. Evaluation is accomplished by the following means:

- Recording observations of player interactions and actions in response to simulated injects.
- Analyzing exercise observations to identify strengths and areas for improvement to develop an Improvement Plan.
- Assigning a rating for each objective based off collective observations regarding areas of improvement.

## EVALUATOR INSTRUCTIONS

### General

- Avoid personal conversations with players.
- Do not give information to players about event progress or other participants' methods of problem resolution. Players are expected to obtain information through their own resources, SimCell, and/or other players.

### Before the Exercise

- Review appropriate emergency plans, procedures, and protocols.
- Participate in the Controller/Evaluator/Simulator training.
- Review appropriate exercise materials, including the exercise schedule and evaluator instructions.
- Review the EEGs and other supporting materials to gain a thorough understanding of the objectives and critical tasks associated with each.
- Report to designated exercise location no later than 7:45 AM on all exercise days.

### During the Exercise

- Use EEGs to document performance relative to exercise objectives.
- Focus on whether players complete activities associated with objectives.
- Stay in proximity to player decision-makers to best capture observations.

### After the Exercise

- Do not discuss specific issues or problems with participants prior to the Hotwash.
- Participate in the Hotwash and take notes on findings identified by players.
- Summarize notes and prepare for any designated staff Debriefings.
- Complete and submit all EEGs and other documentation as directed by Exercise Director.

## EVALUATOR DOCUMENTATION

The evaluator documentation package for the PSPS Functional Exercise consists of the C/E Handbook, EEGs; MSEL, and other items as necessary. Evaluators should review and reference this documentation before and during the exercise. Evaluators may utilize additional materials such as relevant PSPS protocols, as needed.

### Exercise Evaluation Guides

Internal SDG&E staff will serve as evaluators to assess SDG&E's response activities to a PSPS event. The EEGs will serve as a consistent tool to guide internal evaluators through the exercise observation and evaluation process. EEGs are aligned to the exercise objectives and provide evaluators a way to provide feedback of strengths, areas for improvement, and overall performance rating. Assessments collected in the EEGs by each evaluator will be used to develop the AAR. Evaluators should complete their assigned EEGs and submit them to the Lead Evaluator at the conclusion of the exercise for each day.

### After Action Report/Improvement Plan

The focus of the AAR is the analysis of objectives. For each objective exercised, the AAR includes strengths and areas for improvement. Following completion of the draft AAR, subject matter experts and appropriate leadership within SDG&E will confirm the observations identified in the AAR and determine which areas for improvement require further action. As part of the improvement planning process, corrective actions are identified to resolve those areas for improvement and determine the appropriate SDG&E group(s) responsible for those actions.

## USING EXERCISE EVALUATION GUIDES

The EEGs are structured to capture information specifically related to the pre-determined evaluation requirements developed by the Exercise Planning Team. The following evaluation requirements are documented in each EEG:

- **Objectives:** Objectives are the performance thresholds for each core capability, and state exactly what that player aims to achieve.
- **Core capabilities:** Core capabilities are the distinct critical elements necessary to achieve a specific mission area (e.g., response).
- **Ratings:** The summary description of performance as related to achieving the objectives. The ratings should be a summary of how players performed in accomplishing the objective and are not reflective of one particular task.

### Documenting Observations

For each EEG, evaluators provide observation notes, root causes of observations, and a final rating for each objective. To efficiently complete these sections of the EEG, evaluators should focus their observations on exercise play activities associated with each objective. Notes should be organized based on observed player strengths and areas for improvement. Additional instruction is contained in the EEGs for each exercise day.

Additionally, observations should include:

- How an activity was accomplished and associated to an exercise objective.
- Pertinent decisions made and information gathered to make those decisions.
- Requests made and how requests were handled.
- Resources utilized.
- Plans, policies, procedures, or legislative authorities used or implemented.
- Any other factors that contributed to the decision-making process.

# SIMULATOR INFORMATION & GUIDANCE

Because the exercise is of limited duration and scope, certain details will be simulated, as will be outlined in the exercise briefings.

## OVERVIEW

Simulators are control staff personnel who roleplay non-participating organizations or individuals who would otherwise be involved in a real-world environment involving the proposed scenario. They most often operate out of the Simulation Cell (SimCell), but they may occasionally have face-to-face contact with players. Simulators function semi-independently under the supervision of SimCell Lead Controller, enacting roles (e.g., media reporters or customers) in accordance with instructions provided in the Master Scenario Events List (MSEL). All simulators are ultimately accountable to the Exercise Director and SimCell Lead Controller.

## SIMULATOR INSTRUCTIONS

### Before the Exercise

- Review appropriate emergency plans, procedures, and protocols.
- Review appropriate exercise package materials, including scenario, MSEL/injects, Exercise Roster, StartEx materials, and simulator instructions.
- Report to designated exercise location no later than 7:15 AM on all exercise days.

### During the Exercise

- Simulators releasing injects must begin and end all exercise communications with the statement, "EXERCISE, EXERCISE, EXERCISE."
- Role play as non-participating organizations or individuals.
- Enact roles in accordance with instructions provided in the MSEL.
- Deliver injects as directed by the SimCell Controller via Teams or phone.
- Review scenario, Master Scenario Events List (MSEL) and this document prior to the exercise.
- Do not release an inject without guidance/approval from the SimCell Controller.
- Send injects to the appropriate player as detailed within the MSEL.
- Field calls or Teams interactions from players and interact based on their desired entity they wish to speak with and their request/response.
- Respond accordingly to players utilizing your knowledge of the scenario, existing plans/policies/procedures, and expertise.
- Instruct players on how to follow up.
- Track inject delivery, note any interactions/decisions made with players, and note any follow-up required.
- All injects are to be delivered primarily via Teams; If unable to reach via Teams, injects to are to be delivered via phone, unless otherwise directed. Adhere to the day-of exercise roster for a list of participants.

### After the Exercise

- At the conclusion of the exercise, summarize any notes/observations and provide them to the SimCell Controller.
- Attend the exercise Hotwash.

## DOCUMENTATION

The simulator documentation to focus on for the position consists of the C/E Handbook, MSEL and Exercise roster. Simulators should review and reference this documentation before and during the exercise. Simulators may utilize additional professional materials, as required.

### **Master Scenario Event List (MSEL)**

The MSEL contains injects designed to simulate exercise play and promote expected player actions. Each inject includes a script/message that contains the information needed to trigger player response actions per the appropriate plan, policy, or procedure. These messages may also contain related attachments to drive exercise play (e.g., maps, weather reports). All injects will originate from simulated entities (individuals, agencies/organizations, tools, systems, etc.). Simulators will reference this document in the delivery of their assigned injects. Simulators should review and understand each MSEL inject required for their segments of the exercise.

### **Exercise Roster**

The Exercise roster displays the players for that particular day of exercise and their associated position. Staff are to adhere to this list when delivering inject messages, unless otherwise directed.

# APPENDIX A: EXERCISE SCHEDULE

Time	Activity
<b>All Days</b>	
7:15 – 7:45 AM	Staff Arrival
8:30 – 9:00 AM	Player Arrival and Check-In
9:00 – 9:30 AM	Exercise Briefing
<b>Day One (PSPS Activation and Stage 1, 72hr): Monday May 13<sup>th</sup></b>	
9:30 – 10:30 AM	Exercise Play: PSPS Protocol Activation & Break
10:30 – 11:00 AM	Joint Situational Awareness Briefing & EOC Ops Calls
11:00 – 2:00 PM	Exercise Play & Working Lunch: PSPS Stage 1 (72-Hrs Ahead)
2:00 – 3:00 PM	Exercise Wrap-Up
<b>Day Two (PSPS Stage 1, 48hr &amp; 24hr): Tuesday May 14<sup>th</sup></b>	
9:30- 10:00am	Joint Situational Awareness Briefing & EOC Ops Calls
10:00 – 11:30 PM	Exercise Play: PSPS Stage 1 (48-Hrs Ahead)
11:30 – 12:00 PM	Joint Situational Awareness Briefing & EOC Ops Calls
12:00 – 2:00 PM	Exercise Play & Working Lunch: PSPS Stage 1 (24-Hrs Ahead)
2:00 – 3:00 PM	Exercise Wrap-Up
<b>Day Three (PSPS Stage 2 &amp; 3, De-Energization): Wednesday May 15<sup>th</sup></b>	
9:30 – 10:00 AM	Joint Situational Awareness Briefing & EOC Ops Calls
10:00 AM – 2:00 PM	Exercise Play & Working Lunch
2:00 – 3:00 PM	Exercise Wrap-Up
<b>Day Four (PSPS Stage 4 &amp; 5, Re-Energization): Thursday May 16<sup>th</sup></b>	
9:30 – 10:00 AM	Joint Situational Awareness Briefing & EOC Ops Calls
10:00 – 2:00 PM	Exercise Play & Working Lunch
2:00 – 3:00 PM	Exercise Wrap-Up

\* All exercise conduct days will include a working lunch

\* Time is blocked from 9-3 each day to accommodate necessity for exercise play to be extended, however, play will cease per schedule or at discretion of Exercise Director



# APPENDIX B: COMMUNICATIONS PLAN

## GENERAL GUIDANCE

The following communication guidelines should be followed for this exercise.

- All communications will be contained to only those players present for day-of exercise activities and the Simulation Cell (SimCell). **Players for each day will be found by accessing the toolkit/exercise sign-in and/or documentation developed by EOC Planning Section for the designated exercise day.**
- All communications (e.g., written, Teams, telephone, and e-mail) during the exercise will begin and end with the statement “EXERCISE, EXERCISE, EXERCISE”.
- If you need to step away regarding an urgent responsibility, please have someone available to take over as normal response expectations and rules would apply.
- The following communication methods will be utilized for exercise play:
  - Microsoft Teams – EOC Teams Channels and personal Teams Chat
  - Phone & Email
  - Operational Meetings (Operations Briefings, Notification Group Calls, Webinars, Etc.
  - Pre-Scheduled Meeting Calendar Invitations Meetings
  - Public Safety Partner Portal Exercise notifications
- **For all communication to entities not participating in the exercise, players SHOULD contact the SimCell to:**
  - Contact a non-participating organization, department, or individual that is outside of the exercise players list (i.e., customers, SDG&E Field, Etc.)
  - Ask clarifying questions about the exercise scenario
  - Respond to requests/inquiries by a simulated entity
- **Players SHOULD NOT contact the SimCell to:**
  - Speak with participants who ARE playing in the exercise
  - Obtain information that can be found by interacting with exercise players or accessing available systems/platforms
- **To contact the SimCell, players can reach out via phone at 619-207-7327 or via the contact information provided by a Simulator during exercise play interactions.**

All exercise staff can be contacted via Teams or in-person communications.

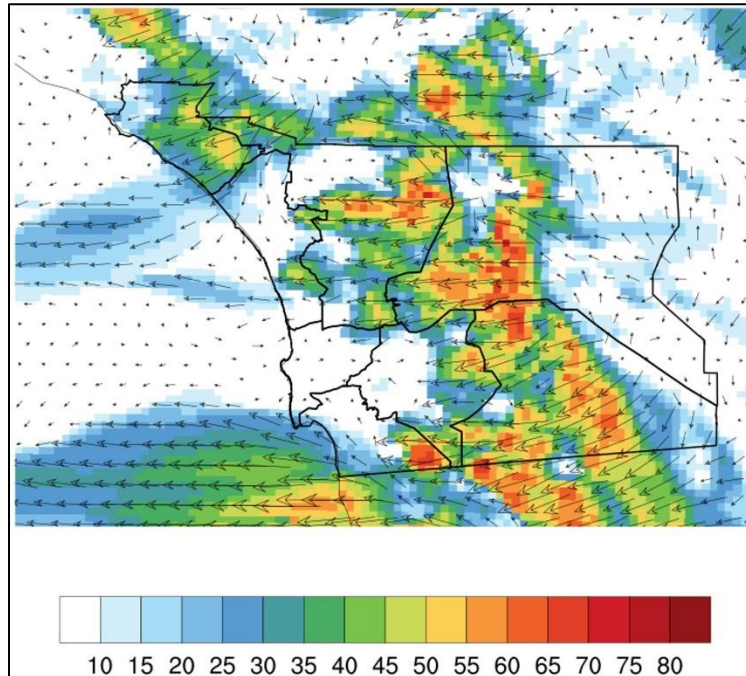
Exercise Staffing	
Exercise Name	Exercise Role
Sarah Glady	Exercise Director
Justin Cox	Lead Controller
Kim Nguyen	SimCell Controller
Jessica Kunert Milo Warner Sherinna Paguio	Support Controllers
SDG&E T&E Team	Safety Controller
SDG&E T&E Team	Observer Controller
SDG&E & Vendors	Admin/Log Support

# APPENDIX C: EXERCISE SCENARIO

## DAY 1: 72-HRS AHEAD

It is currently 72 hours ahead of an anticipated PSPS event. The Forecasted Peak Gusts, Fire Potential Index (FPI), Santa Ana Fire Potential Index (SAWTI), Fire Weather Watch (FWW), and GIS Potential Areas for de-energization outlooks read as follows:

**Forecasted Peak Gusts (72-Hrs Ahead)**





**Fire Potential Index (72-Hrs Ahead)**

	Sun 5/12	Mon 5/13	Tue 5/14	Wed 5/15	Thu 5/16	Fri 5/17	Sat 5/18
ME	Elevated 13	Elevated 13	Elevated 14	Extreme 16	Elevated 14	Elevated 13	Elevated 12
RA	Elevated 13	Elevated 13	Elevated 14	Extreme 16	Elevated 14	Elevated 13	Elevated 12
EA	Elevated 13	Elevated 13	Elevated 13	Extreme 15	Elevated 14	Elevated 13	Normal 11
NE	Elevated 13	Elevated 13	Elevated 13	Extreme 15	Elevated 14	Elevated 13	Normal 11
OC	Normal 11	Elevated 12	Elevated 13	Extreme 15	Elevated 14	Elevated 13	Normal 11
NC	Normal 11	Normal 11	Elevated 13	Extreme 15	Elevated 13	Elevated 12	Normal 11
BC	Normal 11	Normal 11	Elevated 13	Extreme 15	Elevated 13	Elevated 12	Normal 11
CM	Normal 11	Normal 11	Elevated 13	Extreme 15	Elevated 13	Elevated 12	Normal 11

# 2024 Public Safety Power Shutoff Functional Exercise Controller/Evaluator Handbook

## SAWTI (72-Hrs Ahead)

<div>  <div>SANTA ANA WILDFIRE THREAT INDEX</div>  </div>						
Zones	Sun/May 12	Mon/May 13	Tue/May 14	Wed/May 15	Thu/May 16	Fri/May 17
Zone 1: LA-Ventura						
Zone 2: Orange-Inland Empire						
Zone 3: San Diego						
Zone 4: Santa Barbara						

**NO RATING** Winds are either not expected, will not contribute to significant fire activity.

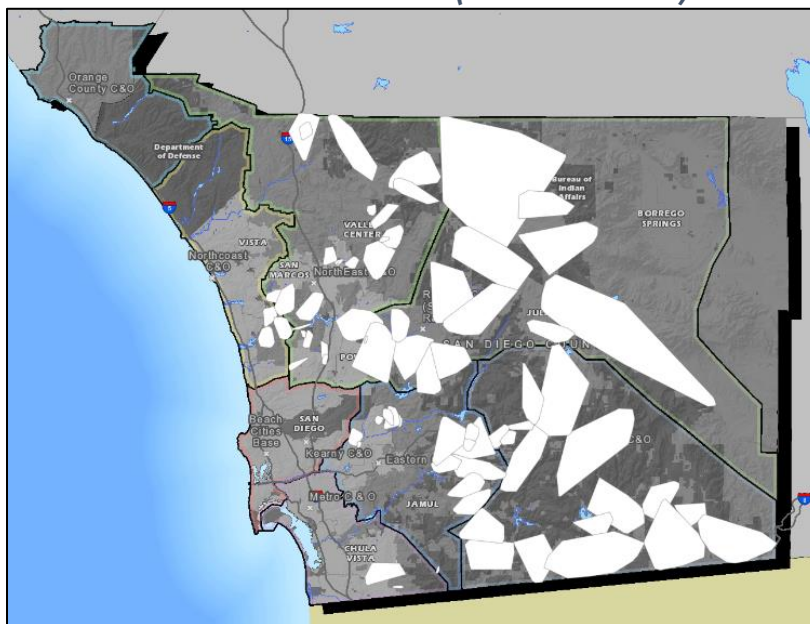
**MARGINAL** Upon ignition, fires may grow rapidly.

**MODERATE** Upon ignition, fires will grow rapidly and will be difficult to control.

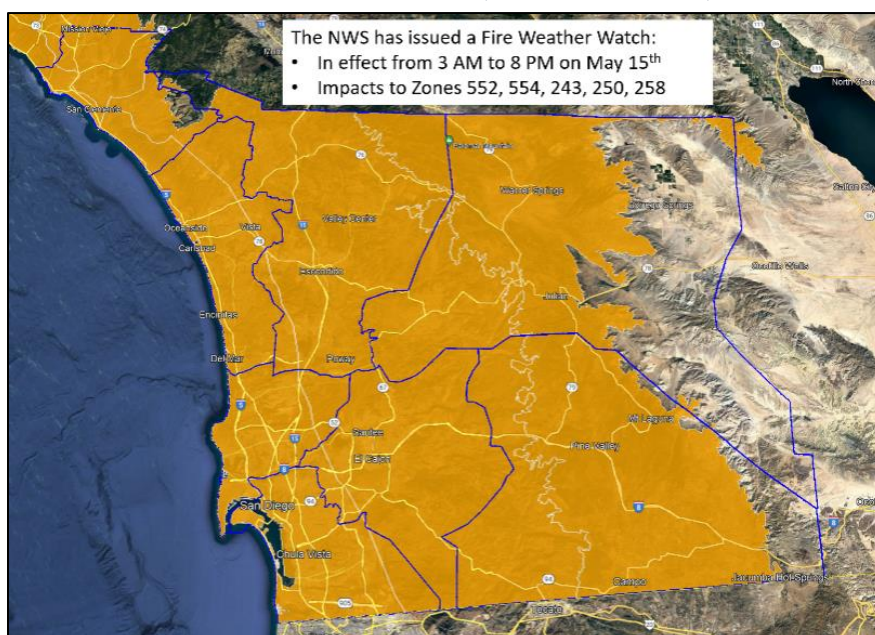
**HIGH** Upon ignition, fires will grow very rapidly, will burn intensely, and will be very difficult to control.

**EXTREME** Upon ignition, fires will have extreme growth, will burn very intensely, and will be uncontrollable.

## Fire Weather Watch (72-Hrs Ahead)



## Fire Weather Watch (72-Hrs Ahead)

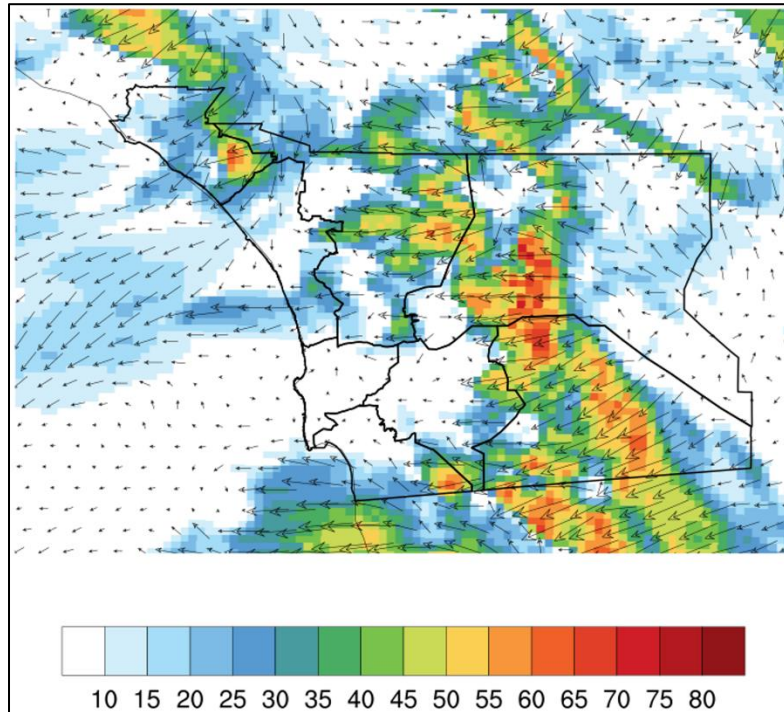




## DAY 2 AM: 48-HRS AHEAD OF DE-ENERGIZATION

It is currently 48 hours ahead of an anticipated PSPS event. The Forecasted Peak Gusts, Fire Potential Index (FPI), Santa Ana Fire Potential Index (SAWTI), Red Flag Warning (RFW), and GIS Potential Areas for de-energization outlooks read as follows:

**Forecasted Peak Gusts (48-Hrs Ahead)**



**Fire Potential Index (48-Hrs Ahead)**

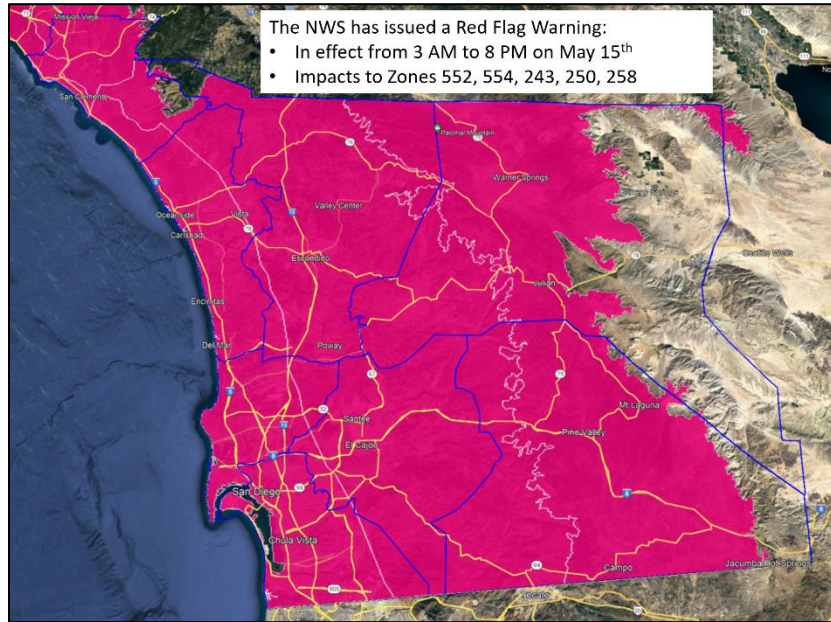
	Mon 5/13	Tue 5/14	Wed 5/15	Thu 5/16	Fri 5/17	Sat 5/18	Sun 5/19
ME	Elevated 13	Elevated 13	Extreme 16	Elevated 14	Elevated 13	Elevated 12	Elevated 12
RA	Elevated 13	Elevated 13	Extreme 16	Elevated 14	Elevated 13	Elevated 12	Elevated 12
EA	Elevated 13	Elevated 13	Extreme 15	Elevated 14	Elevated 13	Normal 11	Normal 11
NE	Elevated 13	Elevated 13	Extreme 15	Elevated 14	Elevated 13	Normal 11	Normal 11
OC	Elevated 13	Elevated 13	Extreme 15	Elevated 14	Elevated 13	Normal 11	Normal 11
NC	Normal 11	Elevated 12	Extreme 15	Elevated 13	Elevated 12	Normal 11	Normal 11
BC	Normal 11	Elevated 12	Elevated 14	Elevated 13	Elevated 12	Normal 11	Normal 11
CM	Normal 11	Elevated 12	Elevated 14	Elevated 13	Elevated 12	Normal 11	Normal 11

## 2024 Public Safety Power Shutoff Functional Exercise Controller/Evaluator Handbook

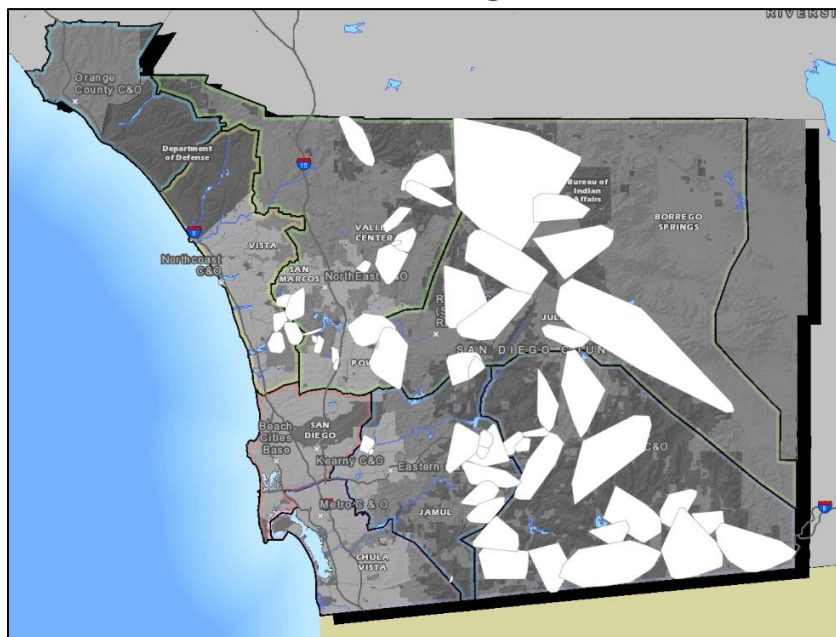
### SAWTI (48-Hrs Ahead)

<div style="display: flex; align-items: center;"> <div> <b>SANTA ANA WILDFIRE THREAT INDEX</b> </div> </div>							
Zones	Mon/May 13	Tue/May 14	Wed/May 15	Thu/May 16	Fri/May 17	Sat/May 18	
Zone 1: LA-Ventura							<div style="display: flex; flex-direction: column; align-items: center;"> <div style="background-color: #cccccc; padding: 5px; margin-bottom: 5px;"><b>NO RATING</b> <small>Winds are either not expected, will not contribute to significant fire activity.</small></div> <div style="background-color: #ffff00; padding: 5px; margin-bottom: 5px;"><b>MARGINAL</b> <small>Upon ignition, fires may grow rapidly.</small></div> <div style="background-color: #ffcc00; padding: 5px; margin-bottom: 5px;"><b>MODERATE</b> <small>Upon ignition, fires will grow rapidly and will be difficult to control.</small></div> <div style="background-color: #ff0000; padding: 5px; margin-bottom: 5px;"><b>HIGH</b> <small>Upon ignition, fires will grow very rapidly, will burn intensely, and will be very difficult to control.</small></div> <div style="background-color: #990099; padding: 5px;"><b>EXTREME</b> <small>Upon ignition, fires will have extreme growth, will burn very intensely, and will be uncontrollable.</small></div> </div>
Zone 2: Orange-Inland Empire							
Zone 3: San Diego							
Zone 4: Santa Barbara							

### Fire Weather Watch (48-Hrs Ahead)



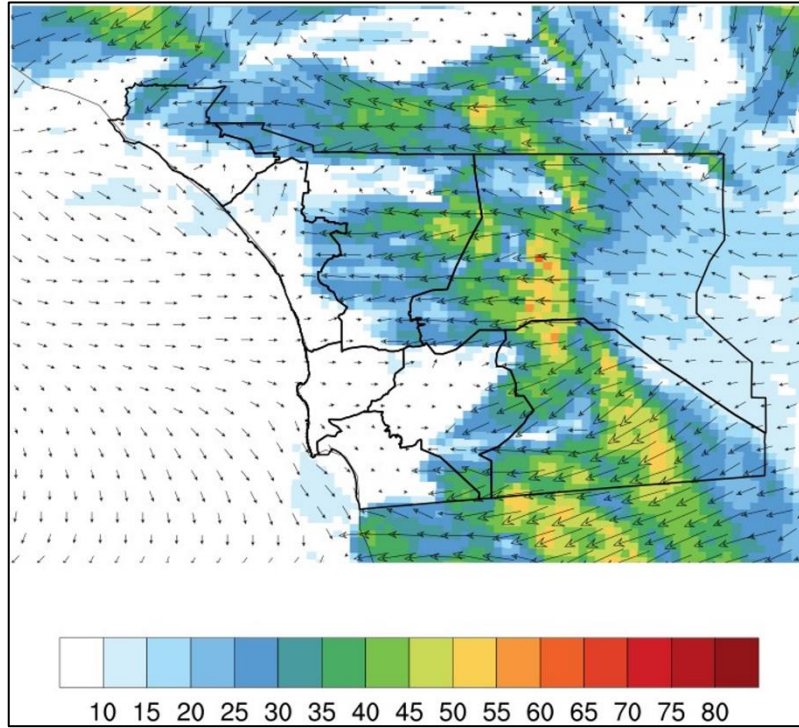
### GIS Potential Areas for De-energization (48-Hrs Ahead)



## DAY 2 PM: 24-HRS AHEAD OF DE-ENERGIZATION

It is currently 24 hours ahead of an anticipated PSPS event. The Forecasted Peak Gusts, Fire Potential Index (FPI), Santa Ana Fire Potential Index (SAWTI), Red Flag Warning (RFW), and GIS Potential Areas for de-energization outlooks read as follows:

**Forecasted Peak Wind Gusts (24-Hrs Ahead)**




**Fire Potential Index (24-Hrs Ahead)**

	<b>Tue 5/14</b>	<b>Wed 5/15</b>	<b>Thu 5/16</b>	<b>Fri 5/17</b>	<b>Sat 5/18</b>	<b>Sun 5/19</b>	<b>Mon 5/20</b>
<b>ME</b>	Elevated 13	Extreme 16	Elevated 14	Elevated 13	Elevated 12	Elevated 12	Normal 11
<b>RA</b>	Elevated 13	Extreme 16	Elevated 14	Elevated 13	Elevated 12	Elevated 12	Normal 11
<b>EA</b>	Elevated 13	Extreme 15	Elevated 14	Elevated 13	Normal 11	Normal 11	Normal 11
<b>NE</b>	Elevated 13	Extreme 15	Elevated 14	Elevated 13	Normal 11	Normal 11	Normal 11
<b>OC</b>	Elevated 13	Extreme 15	Elevated 14	Elevated 13	Normal 11	Normal 11	Normal 11
<b>NC</b>	Elevated 12	Elevated 14	Elevated 13	Elevated 12	Normal 11	Normal 11	Normal 10
<b>BC</b>	Elevated 12	Elevated 13	Elevated 13	Elevated 12	Normal 11	Normal 11	Normal 10
<b>CM</b>	Elevated 12	Elevated 13	Elevated 13	Elevated 12	Normal 11	Normal 11	Normal 10



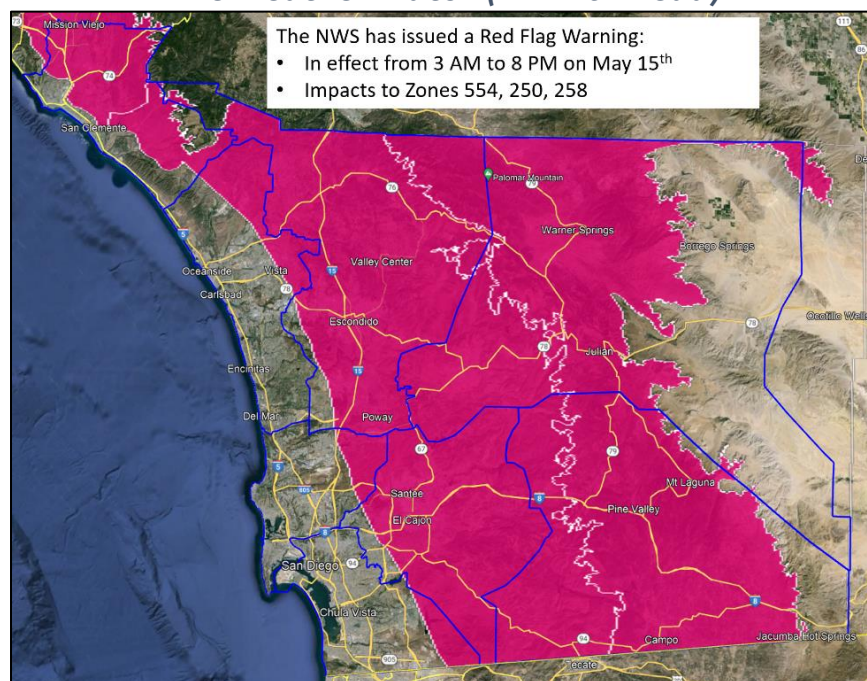
## 2024 Public Safety Power Shutoff Functional Exercise Controller/Evaluator Handbook

### SAWTI (24-Hrs Ahead)

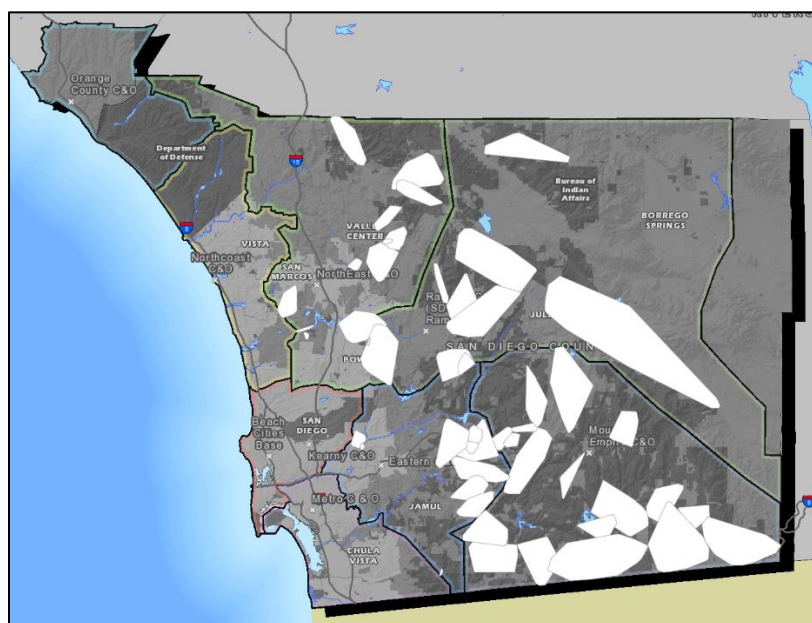
SANTA ANA WILDFIRE THREAT INDEX						
						
Zones	Tue/May 14	Wed/May 15	Thu/May 16	Fri/May 17	Sat/May 18	Sun/May 19
Zone 1: LA-Ventura						
Zone 2: Orange-Inland Empire						
Zone 3: San Diego						
Zone 4: Santa Barbara						

<b>NO RATING</b>	Winds are either not expected, will not contribute to significant fire activity.
<b>MARGINAL</b>	Upon ignition, fires may grow rapidly.
<b>MODERATE</b>	Upon ignition, fires will grow rapidly and will be difficult to control.
<b>HIGH</b>	Upon ignition, fires will grow very rapidly, will burn intensely, and will be very difficult to control.
<b>EXTREME</b>	Upon ignition, fires will have extreme growth, will burn very intensely, and will be uncontrollable.

### Fire Weather Watch (24-Hrs Ahead)



### GIS Potential Areas for De-energization (24-Hrs Ahead)

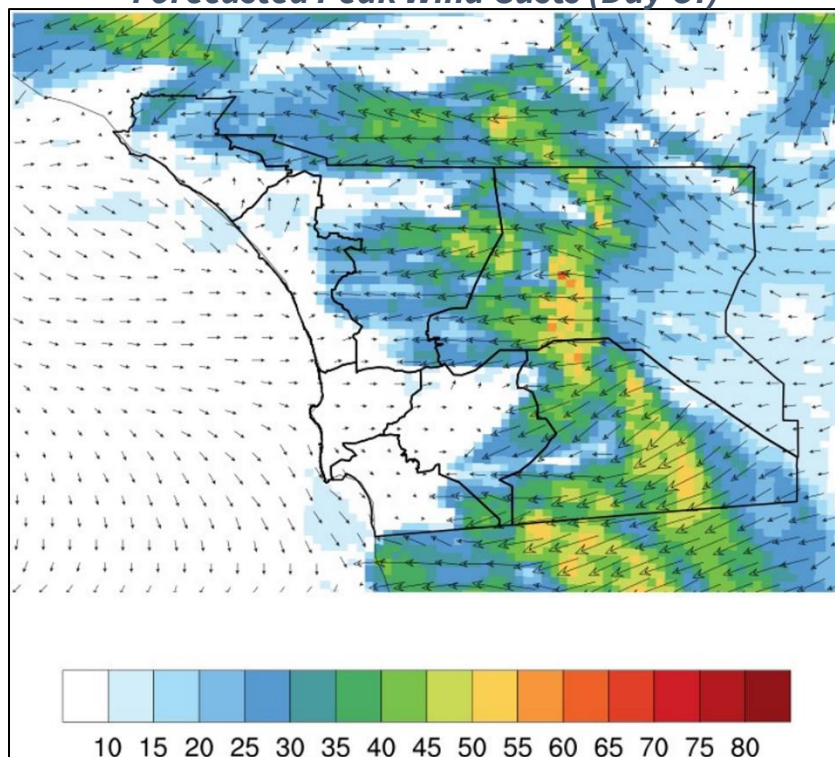




## DAY 3: DAY OF DE-ENERGIZATION

It is currently the day of the forecasted PSPS event. The Forecasted Peak Gusts, Fire Potential Index (FPI), Santa Ana Fire Potential Index (SAWTI) outlooks read as follows:

**Forecasted Peak Wind Gusts (Day Of)**





**Fire Potential Index (Day Of)**

	Wed 5/15	Thu 5/16	Fri 5/17	Sat 5/18	Sun 5/19	Mon 5/20	Tue 5/21
ME	Extreme 16	Elevated 14	Elevated 13	Elevated 12	Elevated 12	Normal 11	Normal 11
RA	Extreme 16	Elevated 14	Elevated 13	Elevated 12	Elevated 12	Normal 11	Normal 11
EA	Extreme 15	Elevated 14	Elevated 13	Normal 11	Normal 11	Normal 11	Normal 11
NE	Extreme 15	Elevated 14	Elevated 13	Normal 11	Normal 11	Normal 11	Normal 11
OC	Extreme 15	Elevated 14	Elevated 13	Normal 11	Normal 11	Normal 11	Normal 11
NC	Elevated 14	Elevated 13	Elevated 12	Normal 11	Normal 11	Normal 10	Normal 10
BC	Elevated 13	Elevated 13	Elevated 12	Normal 11	Normal 11	Normal 10	Normal 10
CM	Elevated 13	Elevated 13	Elevated 12	Normal 11	Normal 11	Normal 10	Normal 10

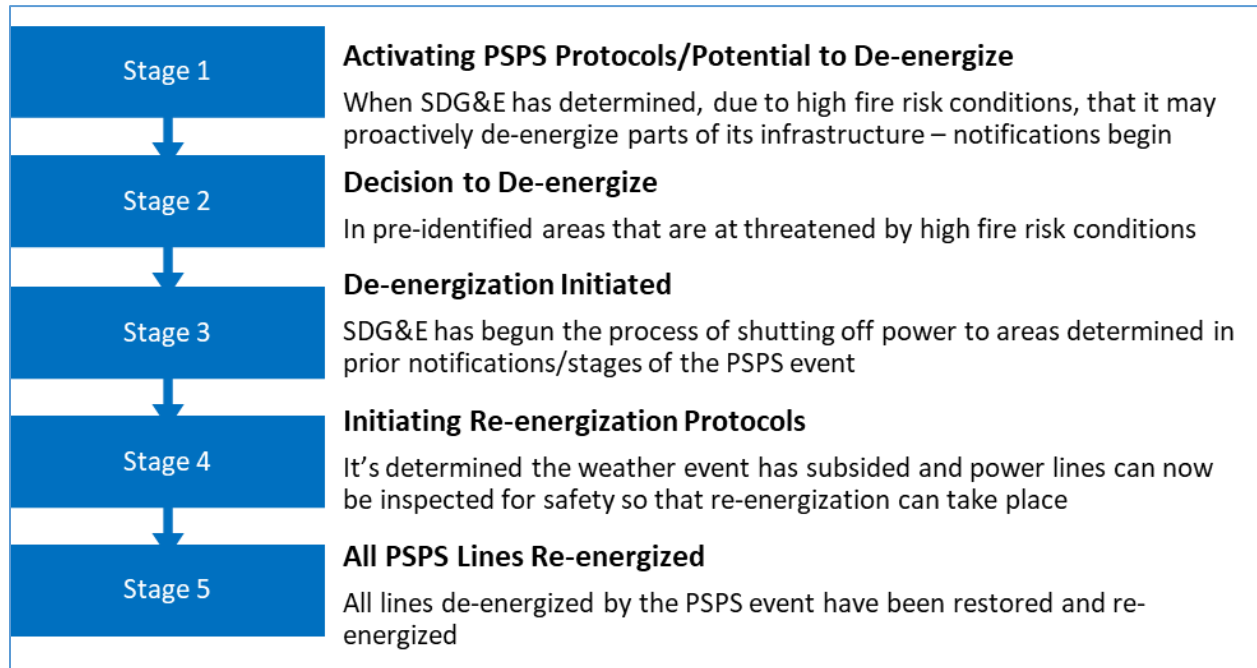
## 2024 Public Safety Power Shutoff Functional Exercise Controller/Evaluator Handbook

### SAWTI (Day Of)

<div style="display: flex; align-items: center; justify-content: space-between;">  <div>SANTA ANA WILDFIRE THREAT INDEX</div>  </div>							NO RATING	Winds are either not expected, will not contribute to significant fire activity.
							MARGINAL	Upon ignition, fires may grow rapidly.
							MODERATE	Upon ignition, fires will grow rapidly and will be difficult to control.
							HIGH	Upon ignition, fires will grow very rapidly, will burn intensely, and will be very difficult to control.
							EXTREME	Upon ignition, fires will have extreme growth, will burn very intensely, and will be uncontrollable.
Zones	Wed/May 15	Thu/May 16	Fri/May 17	Sat/May 18	Sun/May 19	Mon/May 20		
Zone 1: LA-Ventura								
Zone 2: Orange-Inland Empire								
Zone 3: San Diego								
Zone 4: Santa Barbara								

# APPENDIX D: PLAN EXCERPTS

## SDG&E's PSPS Response Stages



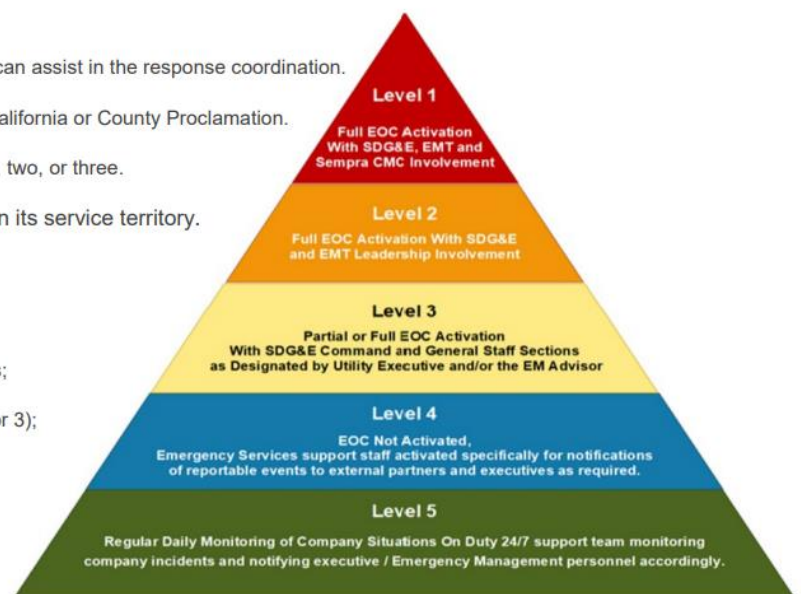
## SDG&E Activation Levels

### The EOC may be activated:

- If there is a Red Flag Warning or Fire Potential Index (FPI) rating of 14 or higher along with forecasted strong Santa Ana winds from the National Weather Service (NWS).
- Multiple business units are required to respond and the EOC activation can assist in the response coordination.
- A State-of-Emergency exists, either as proclaimed by the Governor of California or County Proclamation.
- Any wildfire, which may impact SDG&E critical infrastructure, levels one, two, or three.
- In response to any condition requiring SDG&E to perform PSPS within its service territory.

### The EOC will be activated if any of the following occur:

- If there is a High Wind Warning with forecasted strong Santa Ana winds;
- A request is received from one city in the Operational Area (Level 1, 2, or 3);
- Two cities in the Operational Area activate (Level 1 or 2);
- A request from the Deputy CAO Public Safety, CAO, or a San Diego County Supervisor (Level 1 or Level 2);
- Any actual event that impacts lives or property (Level 1, 2, or 3).



## APPENDIX E: ACRONYMS

Acronym	Term
<b>AAM</b>	After-Action Meeting
<b>AAR</b>	After-Action Report
<b>AFN</b>	Access and Functional Needs
<b>AHAS</b>	Accessible Hazard Alert System
<b>CAISO</b>	California Independent System Operator
<b>Cal OES</b>	California Governor's Office of Emergency Services
<b>C/E</b>	Controller / Evaluator
<b>ConOps</b>	Concept of Operations
<b>CPUC</b>	California Public Utilities Commission
<b>ENS</b>	Enterprise Notification System
<b>EOC</b>	Emergency Operations Center
<b>EEG</b>	Exercise Evaluation Guide
<b>ENS</b>	Emergency Notification System
<b>ExPlan</b>	Exercise Plan
<b>FE</b>	Full Scale Exercise
<b>FPI</b>	Fire Potential Index
<b>GIS</b>	Geographic Information System
<b>HFTD</b>	High Fire Threat District
<b>IP</b>	Improvement Plan
<b>MSEL</b>	Master Scenario Events List
<b>NWS</b>	National Weather Service
<b>PIO</b>	Public Information Officer
<b>PSPS</b>	Public Safety Power Shutoff
<b>SAWTI</b>	Santa Ana Wildfire Threat Index
<b>SDG&amp;E</b>	San Diego Gas & Electric
<b>SimCell</b>	Simulation Cell
<b>Sit Stat</b>	Situation Status Unit